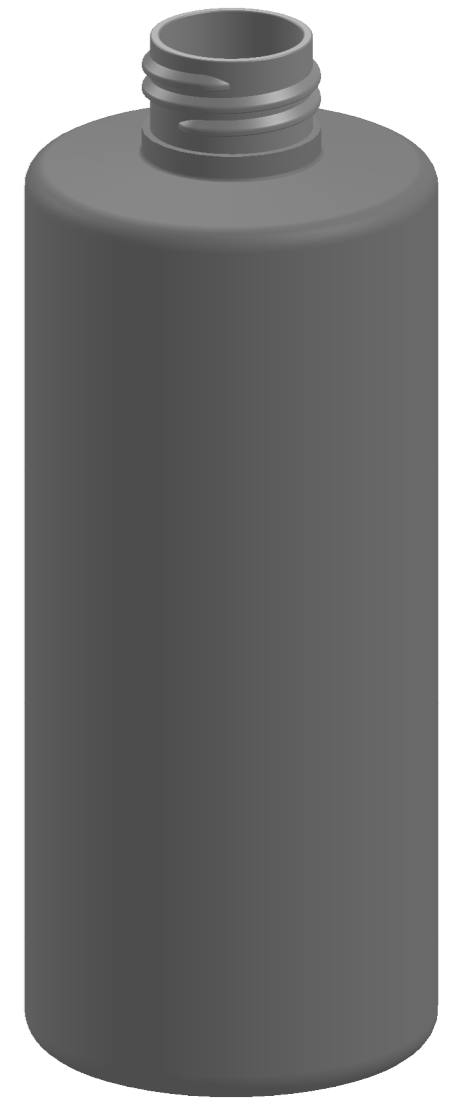
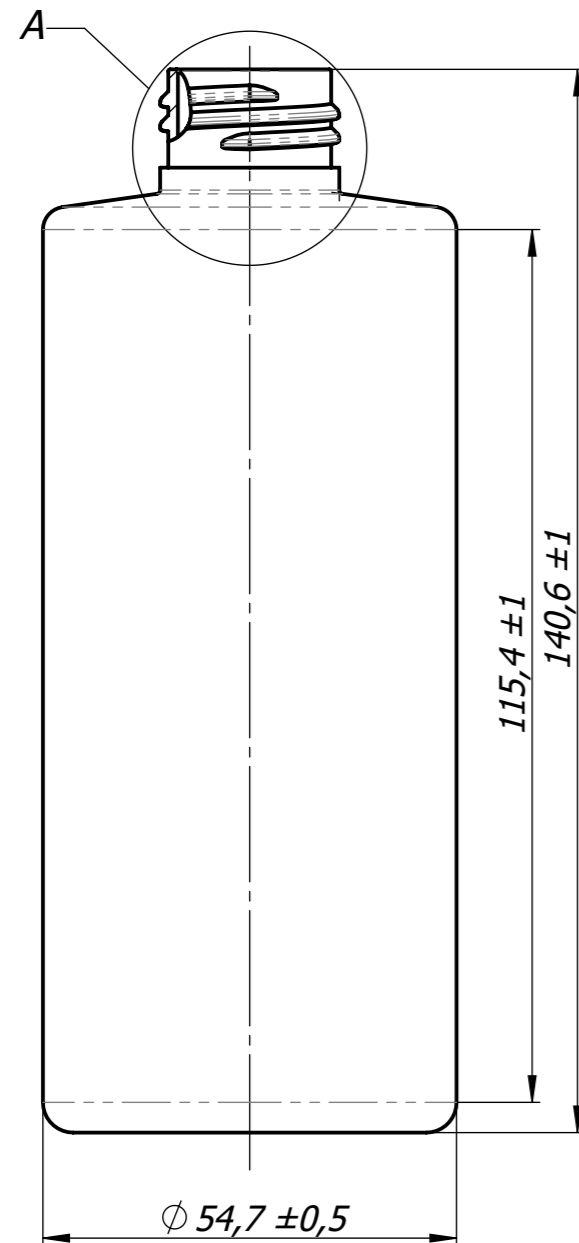


DETAIL A  
SCALE 2 : 1



Uwaga:  
Nietolerowane wymiary zależne od rozdmuchu.  
Note:  
Dimensions without tolerances depend on the blow parameters.

Content	250ml	Name	D.Luch	Date	29.10.2018	Revised by	D.Luch	Rev. no.	01.02	Rev. date	31.10.2018
Content (brimfull)	276±6ml	Author	D.Luch	29.10.2018	M.Trykacz	01.04	18.08.2021				
Material	PET	Drawn by	D.Luch	29.10.2018	Customer dwg no. BU-0675						
Weight	21±1g	Scale: 1:1	Size: A3	Drawing no. B01.0250.030.09 01.04							
Neck	24-410	Masterchem Logoplaste Sp.z o.o.		Przylep - Solidarności 86d 66-015 Zielona Góra							
Cavity	5										

Rysunek stanowi własność Masterchem Logoplaste Sp.z o.o..  
Wszelkie wykorzystywanie i rozprowadzanie bez zgody  
Masterchem Logoplaste Sp.z o.o. zabronione!

The drawing is the property of Masterchem Logoplaste Sp.z o.o..  
All unauthorized using and sharing is prohibited!